



## TERMITE BARRIER INFORMATION

A termite barrier is considered the most effective form of termite prevention because it creates a chemical barrier around the entire perimeter of a home or building. Because all entry points are protected, foraging termites looking for a new food source are unable to enter and are killed on contact. Pest Patrol WA's termite specialists have installed thousands of termite barriers around Perth.

### How is a termite barrier installed?

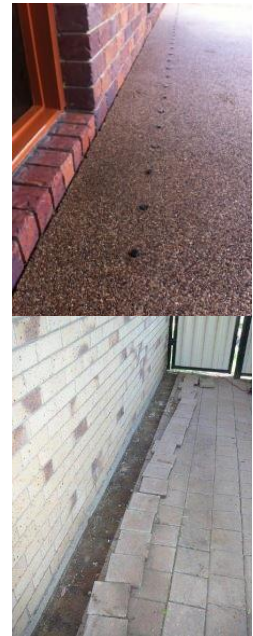
Because all homes are constructed differently, the exact requirements for each barrier can differ. When on site a technician will measure and assess the installation process necessary for your property. However, as a general measure the following techniques are used by Pest Patrol WA technicians:

#### Drilling and Injecting

We drill through concrete or pavers and inject the chemical into the soil below. After injection, the holes are then plugged with a matching coloured plug. When complete these drill holes are neat and tidy, and blend into your concrete or pavers. They are less obvious than you expect, and you will find that most people do not notice them.

#### Lifting and Soaking

Alternatively, we can lift pavers and soak the soil underneath with chemical. In the same way as Drilling and Injecting, this creates a barrier as the chemical binds to the soil and is fixed in its position. The pavers are then neatly replaced.



### What chemicals are used in a termite barrier?

A termite chemical barrier works so effectively because it creates a complete chemical barrier around the entire perimeter of the home. This means termites attempting to gain entry into the house will be killed by the chemical. Three top of the range chemicals are used in barriers at Pest Patrol WA.

#### Altriset

This is a non-repellent chemical, which means termites cannot detect the Altriset and will not avoid the treated area. When termites come into contact with Altriset their jaws are paralysed within hours, meaning they are no longer able to damage your home. These termites will then groom and interact with other termites, spreading Altriset to other members of the colony and nest. Altriset is the only liquid termiticide that is exempt from poison scheduling by Australian regulatory authorities. It is harmless to humans and has a very low toxicity to pets, birds, fish, earthworms, and bees. For more information on Altriset, you can visit their website at [www.altriset.com.au](http://www.altriset.com.au).

#### Biflex

This is a repellent chemical, which means the termites know it is there and hence avoid it. However if they do walk into the chemical it will kill them instantly. FMC, the manufacture for Biflex provide Eflex, a million dollar timber replacement warranty for termite barriers completed using Biflex. For more information on Eflex please visit their website [www.eflex.net.au](http://www.eflex.net.au).

#### Termidor

This is a non-repellent chemical, which means termites cannot detect the Termidor and will not avoid the treated area. As termites continue to forage through the soil they will encounter Termidor and pick up a lethal dose. Due to the unique "Transfer Effect" these termites are now carriers and spread Termidor to all other termites they come into contact with. This means an entire nest can be indirectly eradicated. This chemical has proven to be so effective, Pest Patrol WA also use it in their treatments for black ants, as they nest in a similar manner to termites, we can potentially wipe out an entire colony using Termidor. For more information on Termidor, please visit their website [www.termidor.com.au](http://www.termidor.com.au).

### Do I get a warranty with my termite barrier?

Yes. Generally a five year service period is supplied (subject to terms and conditions, including annual inspections). This means that if for some reason termites enter your home, we will return to the property to treat the live termites.

